



©BOONE SPEED

WALLTOPIA OUTDOOR **CLIMBING WALLS**

BEHIND THE WALLS

MATERIALS

Outdoor climbing structures bear loads of climbing activities similar to any other climbing wall but on top of that they have to be able to resist weather impact. Building a structure exposed to the elements means that additional factors such as snow and wind loads, effects of rain and sun exposure, temperature changes and others have to be taken into consideration. In order to make an outdoor structure suitable for use and ensure appropriate longevity, the range of materials is different from the ones used for indoor climbing structures.



SURFACE PANELS

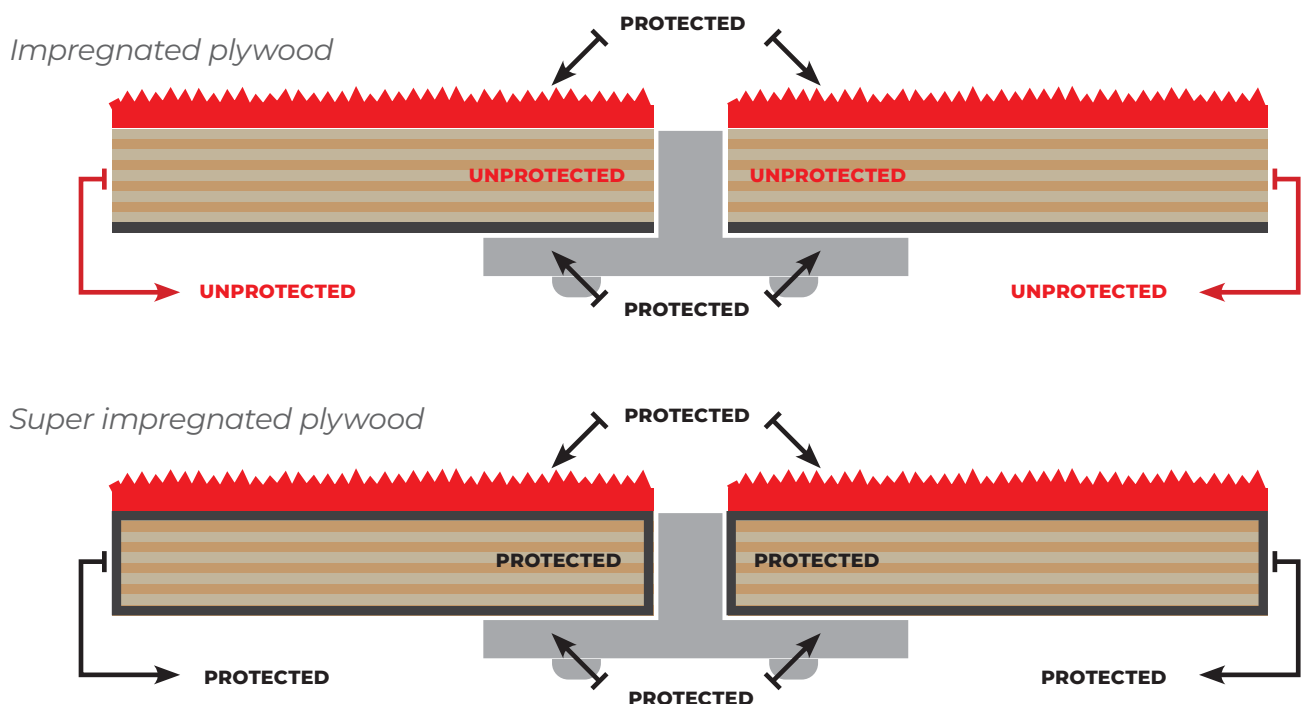
1. Impregnated plywood

The standard plywood wall panel is impregnated with a special hydrophobic emulsion to make the climbing surface water resistant. Although more affordable, with this method some parts of the panels such as holes for the t-nuts and attachment elements remain exposed.



2. Super Impregnated plywood

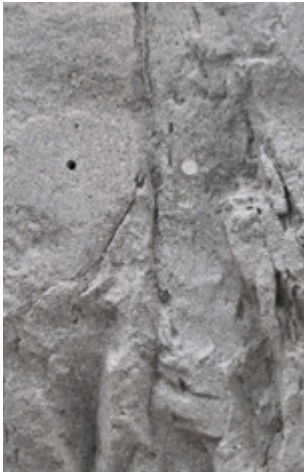
The panels get an additional coating on the weak points (holes, edges, etc.) that makes them completely sealed and protected from the contact with water.



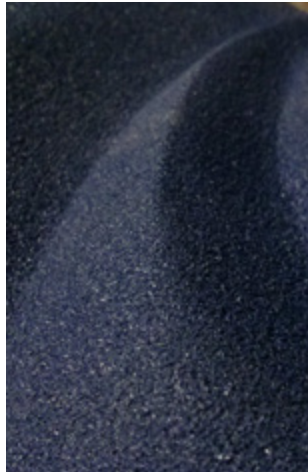
3. Fiberglass panels

The most reliable and durable material for outdoor structures is fiberglass. 100% water resistant, it does not change its characteristics over time. Fiberglass also gives the freedom to design and produce any imaginary shape filling the gap between architect's imagination and the technical restrictions of plywood panels. Here are a few examples:

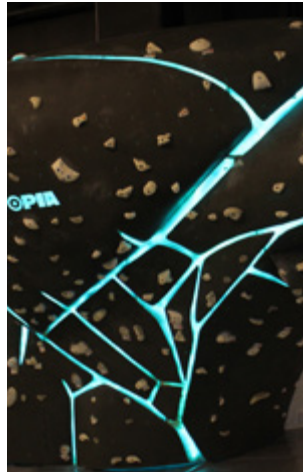
Rocktopia



3D curves



Space design

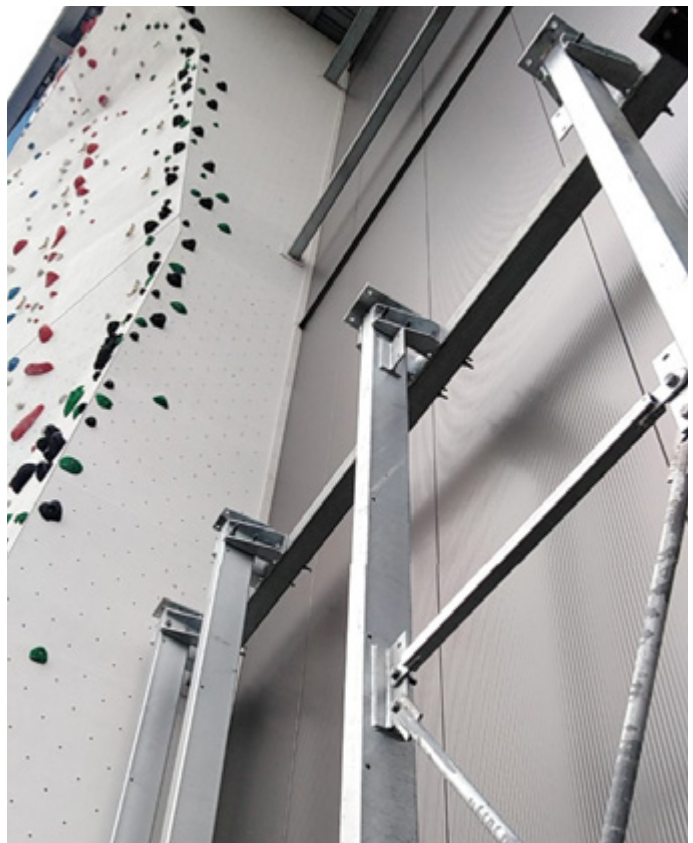


Flat panels



STRUCTURE

Walltopia uses Hot Dip Galvanized steel structures that are commonly used in general construction work. This type of structure is corrosion-resistant and can be used outdoors.



T-NUTS

Our outdoor structures are equipped with stainless steel t-nuts to ensure maximum weather resistance.



ROOFS

Walltopia recommends adding roofs for outdoor climbing walls and boulders. The roof provides protection and longer lifespan of the climbing wall panels and structure and also better customer experience allowing visitors to climb even during bad weather conditions.





**BUILDING
THE WALL**

THE PROCESS

The construction process is illustrated through a recently finished project - the outdoor tower at DAV Beckum, Germany. Thanks to our client who documented in detail every step of the process and shared the images with us, we can show you the full process.

1. Delivery of materials



2. Installation of main steel frame



3. Installation of roof steel beams



4. Installation of secondary steel columns



5. Installation of roof metal sheets



6. Installation of impregnated plywood panels



Photos: DAV Beckum

WALLTOPIA



WALLTOPIA
PROJECTS

OeAV Waizenkirchen

AUSTRIA, Waizenkirchen

Year of Completion: **2020**

Total Climbing Surface: **270 m² | 2 906 ft²**

Design Style: **Geome3x**



Lead, Speed & Boulder Competition Wall

SERBIA, Belgrade

Year of Completion: **2019**

Total Climbing Surface: **1 027 m² | 11 054 ft²**

Design Style: **Geome3x**

Website: www.rzsport.gov.rs



DAV Beckum Outdoor Tower

GERMANY, Beckum

Year of Completion: **2019**

Total Climbing Surface: **540 m² | 5 812 ft²**

Design Style: **Geome3x**

Website: www.alpenverein-beckum.de



Fonden Amager Bakke

DENMARK, Copenhagen

Year of Completion:	2019
Total Climbing Surface:	691 m² 7 437 ft²
Design Style:	Geome3x

Website:	www.fondenab.dk
----------	--





Big Wall - Luzhniki

RUSSIA, Moscow

Year of Completion:	2019
Total Climbing Surface:	900 m² 9 687 ft²
Design Style:	Geome3x

Website:	www.bigwallsport.ru
----------	--





Bergstation

GERMANY, Hilden

Year of Completion: **2019 / 2016**

Total Climbing Surface: **2 975 m² | 32 022 ft²**

Design Style: **Geome3x**

Website: www.bergstation.nrw



Totem Ecublens

SWITZERLAND, Ecublens

Year of Completion: **2018**

Total Climbing Surface: **1 149 m² | 12 367 ft²**

Design Style: **Geome3x**

Website: www.totem.ch



Roccadion

GERMANY, Böblingen

Year of Completion: **2018**

Total Climbing Surface: **832 m² | 8 955 ft²**

Design Style: **Geome3x**

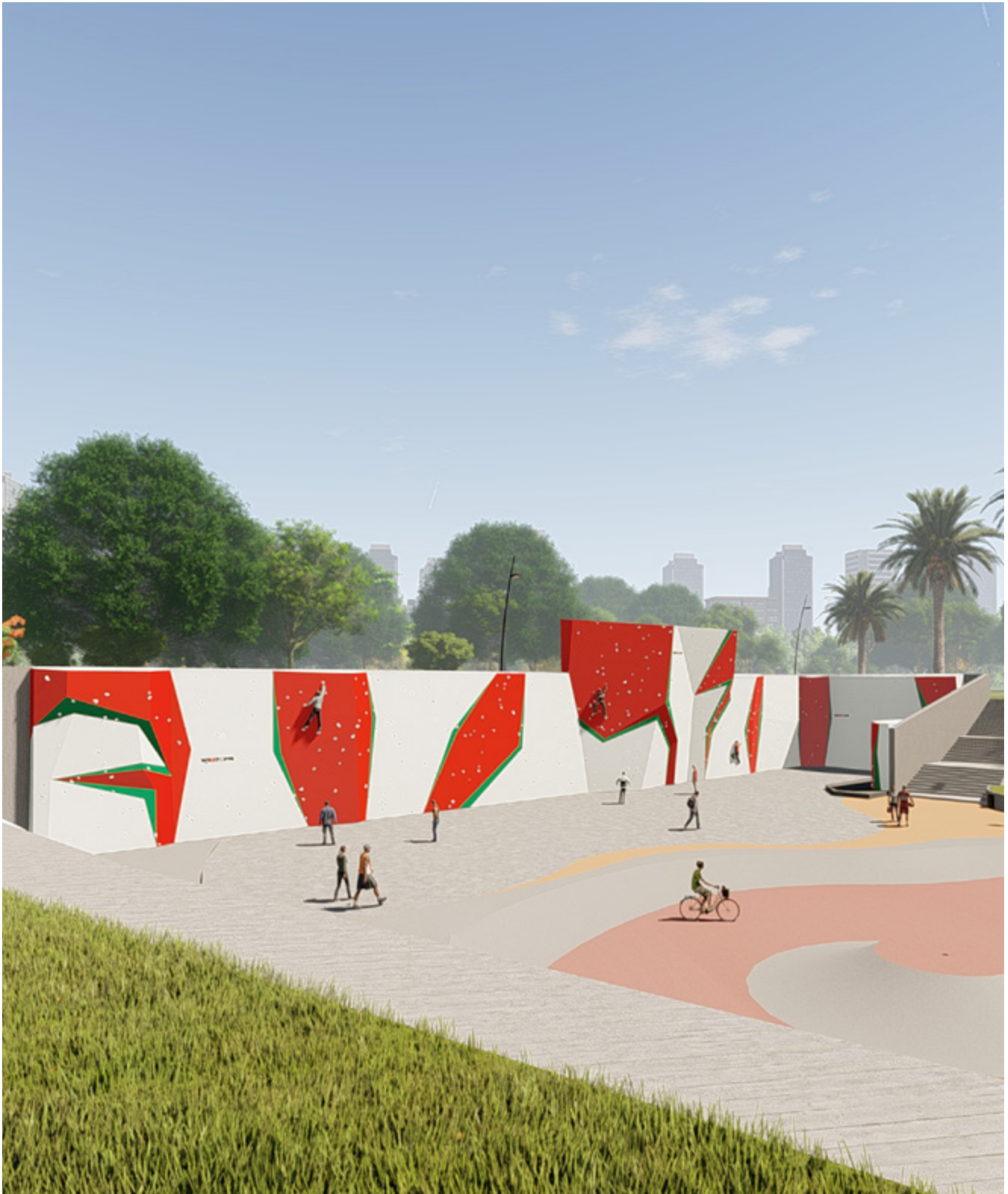
Website: www.roccadion.de



Boulder project

MOROCCO, Rabat

Year of Completion:	2018
Total Climbing Surface:	880 m² 9 472 ft²
Design Style:	Geome3x



DAV Kletterzentrum

GERMANY, Augsburg

Year of Completion: **2018**

Total Climbing Surface: **3 200 m² | 34 444 ft²**

Design Style: **Geome3x**

Website: www.dav-kletterzentrum-augsburg.de



Liyang Extreme Sports

CHINA, Henan

Year of Completion: **2018**

Total Climbing Surface: **828 m² | 8 912 ft²**

Design Style: **Geome3x**



DAV Sektion Heilbronn

GERMANY, Heilbronn

Year of Completion: **2018**

Total Climbing Surface: **573 m² | 6 167 ft²**

Design Style: **Geome3x**

Website: www.dav-heilbronn.de



JURABLOC DAV Kletterzentrum

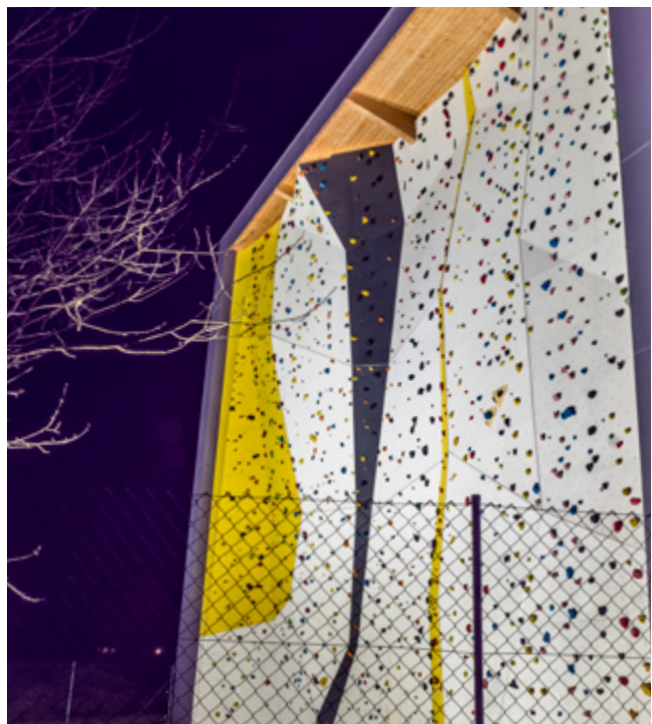
GERMANY, Eichstätt

Year of Completion: **2018**

Total Climbing Surface: **300 m² | 3 229 ft²**

Design Style: **Geome3x**

Website: www.jurabloc.de



Kletterzentrum

AUSTRIA, Innsbruck

Year of Completion: **2017**

Total Climbing Surface: **6 377 m² | 68 641 ft²**

Design Style: **Geome3x**

Website: www.kletterzentrum-innsbruck.at







Swoboda Alpin

GERMANY, Kempten

Year of Completion: **2017**

Total Climbing Surface: **940 m² | 10 118 ft²**

Design Style: **Geome3x**

Website: www.dav-kempten.de/swoboda-alpin



Climb Up Aix

FRANCE, Bouc-Bel-Air

Year of Completion: **2017**

Total Climbing Surface: **2 800 m² | 30 138 ft²**

Design Style: **Geome3x**

Website: www.aix-boucbelair.climb-up.fr



Year of Completion: **2016**

Total Climbing Surface: **277 m² | 2 981 ft²**

Design Style: **Geome3x**

Website: www.bergstation.tirol



SVN Kletterzentrum

GERMANY, Munchen

Year of Completion: **2017**

Total Climbing Surface: **1 234 m² | 13 282 ft²**

Design Style: **Geome3x**

Website: www.svn-muenchen.de/index.php/startseite-klettern



Boulderwand Amras

AUSTRIA, Innsbruck

Year of Completion:	2016
Total Climbing Surface:	139 m² 1 496 ft²
Design Style:	Geome3x, Rocktopia



U.S. National Whitewater Center

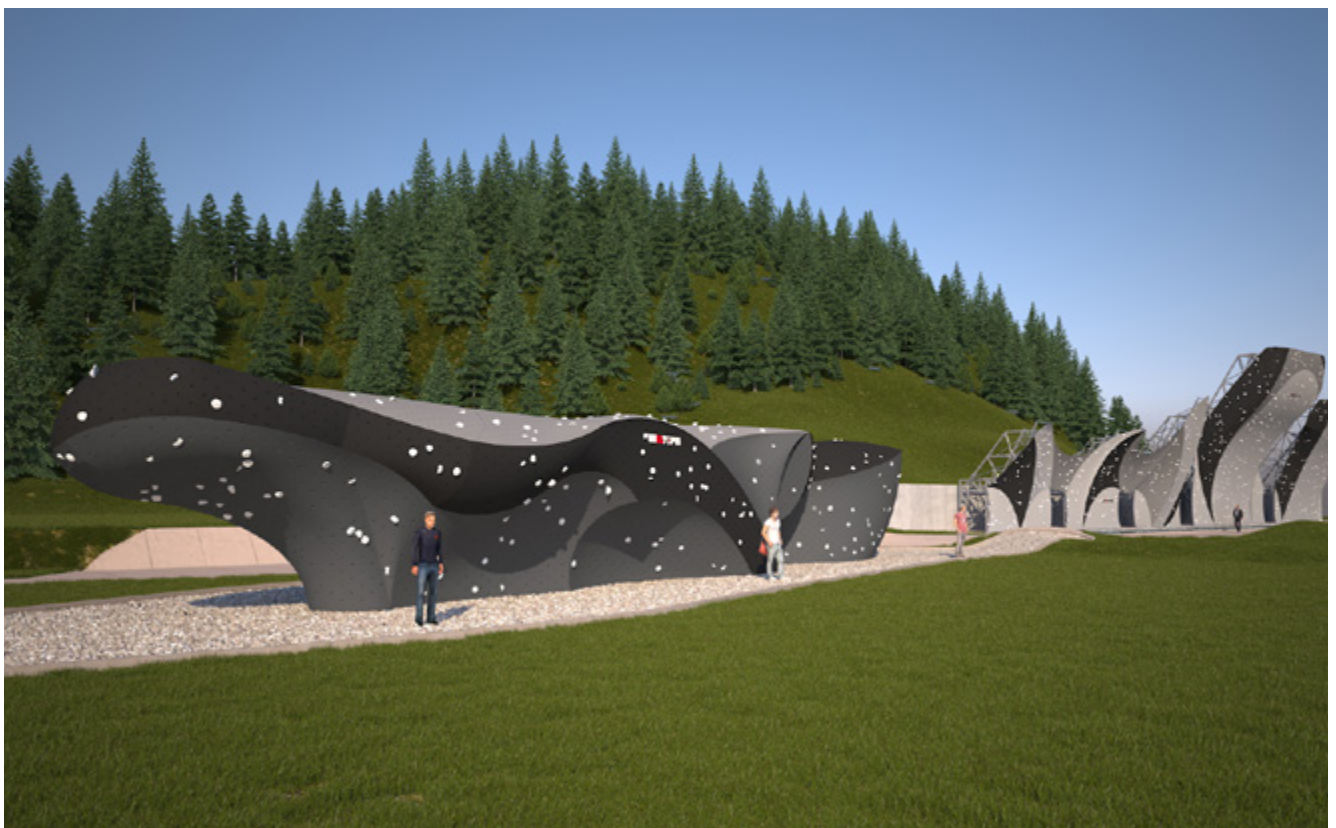
USA, Charlotte

Year of Completion: **2016**

Total Climbing Surface: **502 m² | 5 409 ft²**

Design Style: **3D Curves**

Website: www.usnwc.org/activity/climbing

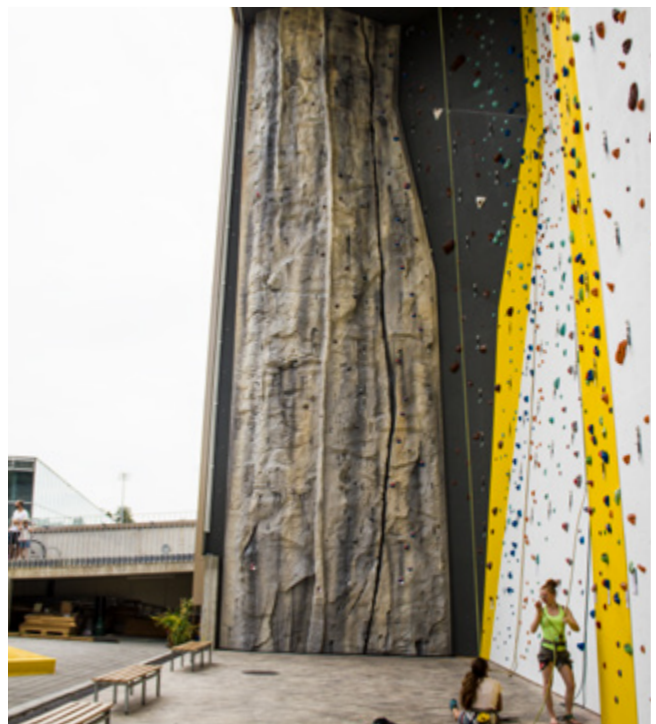


Year of Completion: **2015**

Total Climbing Surface: **660 m² | 7 104 ft²**

Design Style: **Geome3x, Rocktopia**

Website: www.griffig.com



Kletterhalle Mondsee OAV

AUSTRIA, Mondsee

Year of Completion:	2015
Total Climbing Surface:	670 m² 7 211 ft²
Design Style:	Geome3x
Website:	www.kletterhalle-mondsee.at



Psicocomp MILAN

ITALY, Milan

Year of Completion: **2015**

Total Climbing Surface: **117 m² | 1 259 ft²**

Design Style: **Geome3x**

Website: www.psicocomp.com/milano-outdoor-games-2015



Kletterzentrum Ap 'n Daun

SWITZERLAND, Chur

Year of Completion:

2015

Total Climbing Surface:

2 022 m² | 21 764 ft²

Design Style:

Rocktopia Granite, 3D Curves, Geome3x

Website:

www.kletterzentrumchur.ch



Dumbo Boulders

USA, New York

Year of Completion: **2015**

Total Climbing Surface: **453 m² | 4 886 ft²**

Design Style: **3D Curves**

Website: www.dumbo.thecliffsclimbing.com



© Boone Speed

Climbing Tower Martinique

FRANCE, Martinique

Year of Completion:	2015
Total Climbing Surface:	90 m² 967 ft²
Design Style:	Geome3x



Vaude Headquarters

GERMANY, Tettngang

Year of Completion: **2015**

Total Climbing Surface: **160 m² | 1 722 ft²**

Design Style: **Geome3x**

Website: www.vaude.com



Alpenverein Ried im Innkreis

AUSTRIA, Ried

Year of Completion: **2015**

Total Climbing Surface: **280 m² | 3 013 ft²**

Design Style: **Geome3x**

Website: www.alpenverein.at/ried-im-innkreis/kletterhallen/test.php



Chamonix World Cup

FRANCE, Chamonix

Year of Completion: **2015**

Design Style: **Geome3x**



DAV Landshut

GERMANY, Landshut

Year of Completion: **2014**

Total Climbing Surface: **500 m² | 5 382 ft²**

Design Style: **Geome3x**

Website: www.alpenverein-landshut.de



Kletterhalle Villach

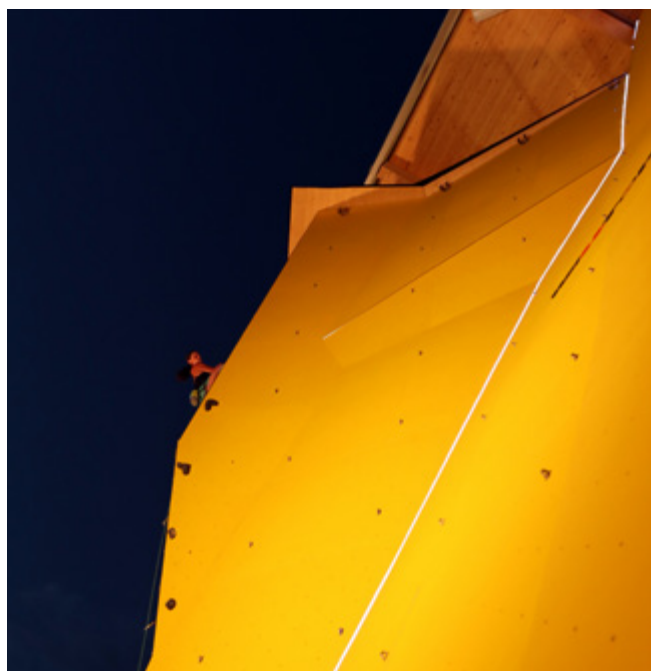
AUSTRIA, Villach

Year of Completion: **2014**

Total Climbing Surface: **216 m² | 2 325 ft²**

Design Style: **Geome3x**

Website: www.kletterhallevillach.at



Kletterturm Unterach

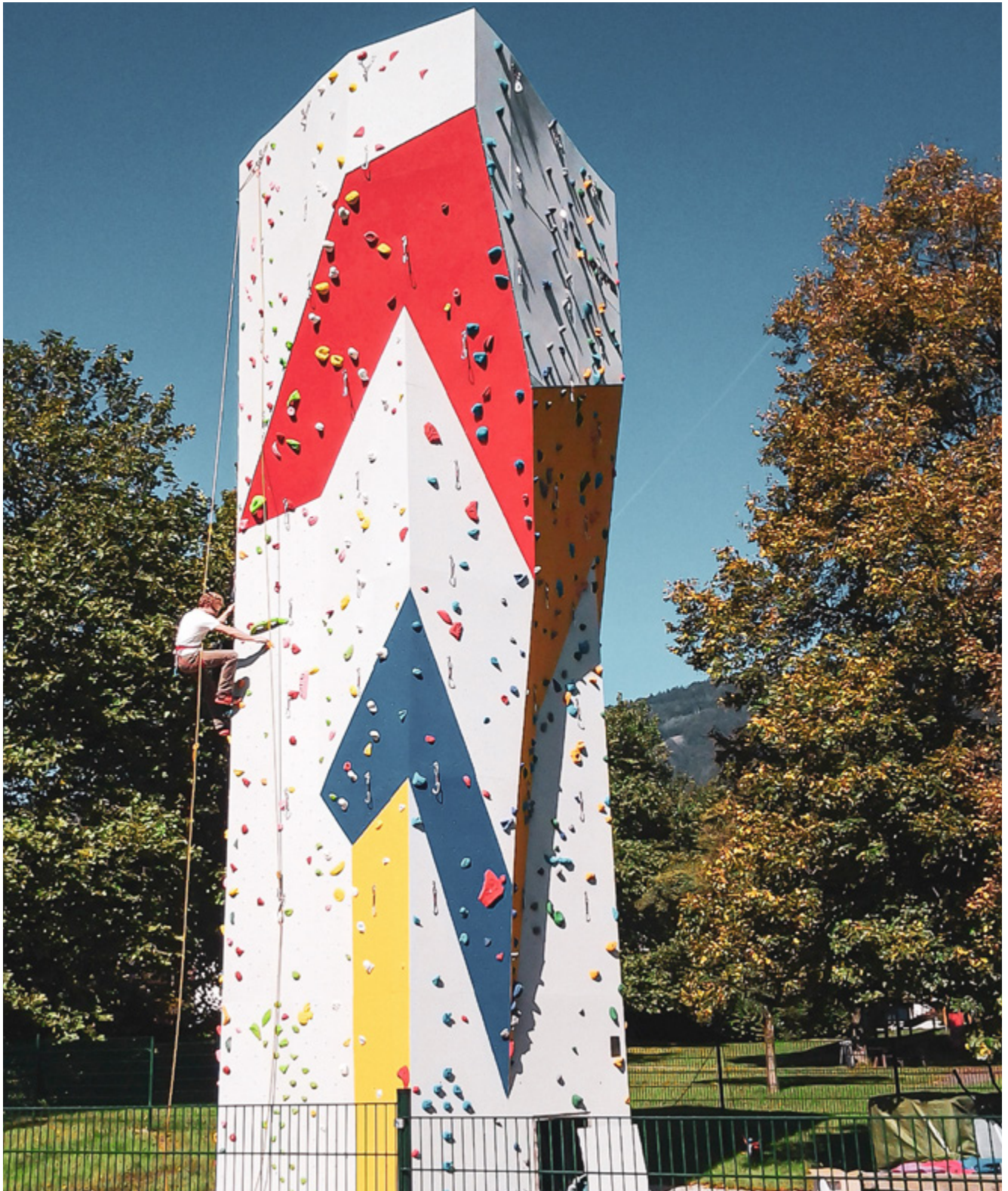
AUSTRIA, Unterach

Year of Completion: **2014**

Total Climbing Surface: **190 m² | 2 045 ft²**

Design Style: **Geome3x, Rocktopia**

Website: www.bergfex.at/sommer/unterach/highlights/15704-kletterturm/



DAV Mindelheim

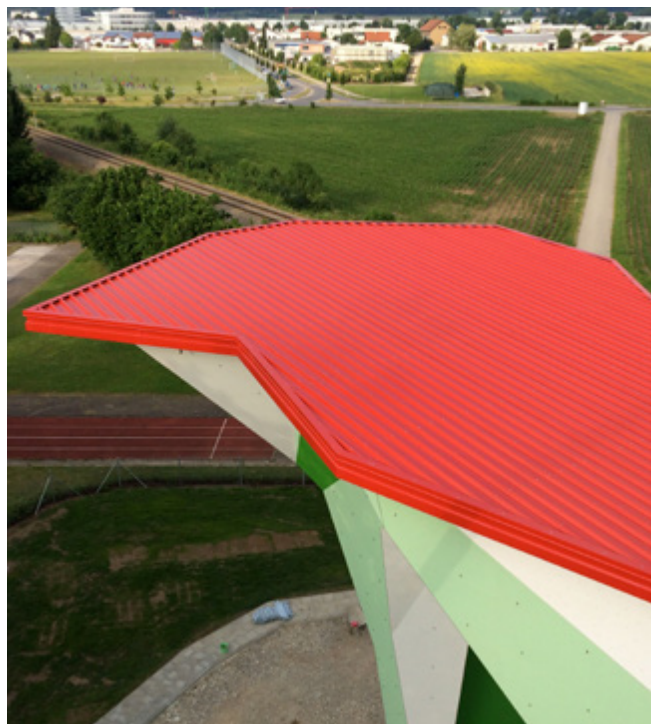
GERMANY, Mindelheim

Year of Completion: **2014**

Total Climbing Surface: **535 m² | 5 759 ft²**

Design Style: **Geome3x**

Website: www.alpenverein-mindelheim.de/kletteranlage/kletteranlage-und-boulderraum.html



DAV Starnberg Outdoor Tower

GERMANY, Starnberg

Year of Completion: **2014**

Total Climbing Surface: **223 m² | 2 400 ft²**

Design Style: **Geome3x, Rocktopia**

Website: www.dav-starnberg.de/index.php/klettern-bouldern/kletterturm



Hotel Salzburgerhof

AUSTRIA, Leogang

Year of Completion: **2014**

Total Climbing Surface: **250 m² | 2 690 ft²**

Design Style: **Geome3x**

Website: www.salzburgerhof.eu



Salzburg Kletteranlage Bergrettung

AUSTRIA, Salzburg

Year of Completion: **2014**

Total Climbing Surface: **115 m² | 1 237 ft²**

Design Style: **Geome3x, Rocktopia**

Website: www.bergrettung-salzburg.at



Arbor et Sens

FRANCE, Saint Genes de Lombaud

Year of Completion: **2013**

Total Climbing Surface: **200 m² | 2 152 ft²**

Design Style: **Rocktopia Limestone**

Website: www.arbor-et-sens.fr



Outdoor Boulder Park Orehovo

RUSSIA

Year of Completion: **2013**

Total Climbing Surface: **41 m² | 441 ft²**

Design Style: **Rocktopia, 3D Curves**

Website: www.facebook.com/pg/boulderparkmsk



Aussenboulder & Kletterturm

AUSTRIA, FISS

Year of Completion: **2013**

Total Climbing Surface: **80 m² | 861 ft²**

Design Style: **Geome3x**

Website: www.serfaus-fiss-ladis.at/de



Psicocomp UTAH

USA, Salt Lake City

Year of Completion:	2013
Total Climbing Surface:	126 m² 1 356 ft²
Design Style:	3D curves

Website:	www.psicocomp.com
----------	--



K5 DAV Kletterzentrum

GERMANY, Rottweil

Year of Completion: **2013**

Total Climbing Surface: **1 918 m² | 20 645 ft²**

Design Style: **Geome3x, Rocktopia Granit**

Website: www.k5-kletterzentrum.de



Mur de Tambourin

FRANCE, Vendargues

Year of Completion:	2013
Total Climbing Surface:	95 m² 1 022 ft²
Design Style:	Geome3x



Blau Weiss Buchholz

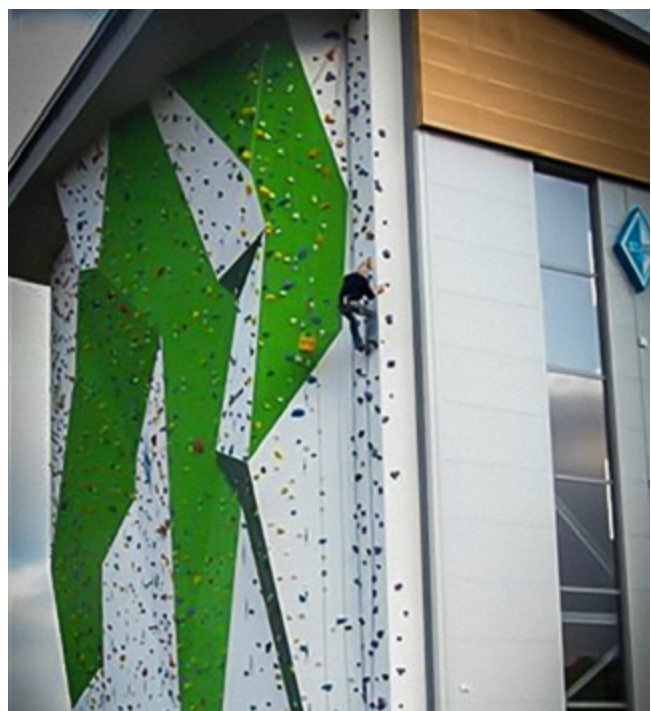
GERMANY, Buchholz

Year of Completion: **2013**

Total Climbing Surface: **350 m² | 3 767 ft²**

Design Style: **Geome3x**

Website: www.blau-weiss-buchholz.de



Kletterhalle Felsenfest

AUSTRIA, Saalfelden

Year of Completion: **2012**

Total Climbing Surface: **1 655 m² | 17 814 ft²**

Design Style: **Geome3x**

Website: www.felsenfest.cc



Competition Boulder

NORWAY, Oslo

Year of Completion: **2012**

Total Climbing Surface: **181 m² | 1 948 ft²**

Design Style: **Geome3x, 3D Curves**

Website: www.klatring.no



Sparkasse DAV Kletterwelt Neu-Ulm

GERMANY, Neu Ulm

Year of Completion: **2011**

Total Climbing Surface: **755 m² | 8 127 ft²**

Design Style: **Geome3x, Rocktopia, 3D curves**

Website: www.sparkassendome.de



Salewa Climbing Hall

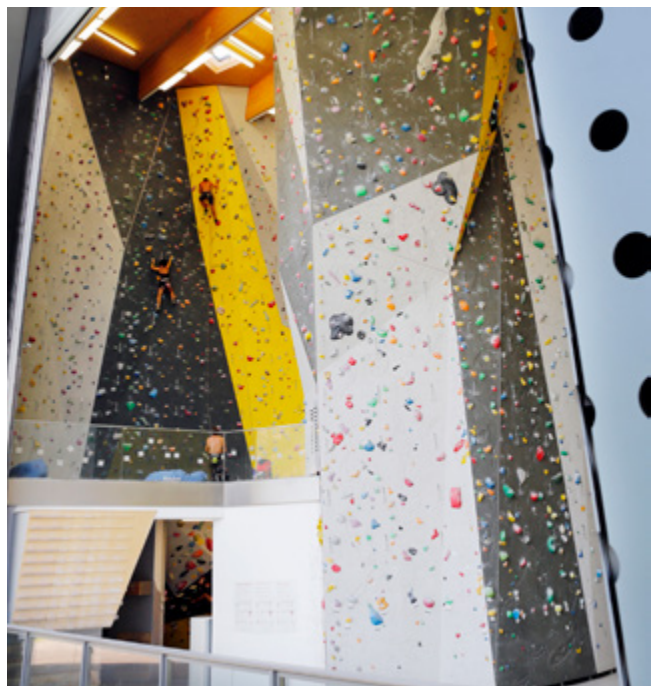
ITALY, Bolzano

Year of Completion: **2011**

Total Climbing Surface: **950 m² | 10 225 ft²**

Design Style: **Geome3x, Rocktopia**

Website: www.salewa-cube.com/en/climbing-hall



Skopje Competition Wall

MACEDONIA, Skopje

Year of Completion:	2011
Total Climbing Surface:	405 m² 4 359 ft²
Design Style:	Geome3x

Website:	www.climbing-macedonia.com
----------	--



Kletterhalle Imst

AUSTRIA, Imst

Year of Completion: **2010**

Total Climbing Surface: **2 000 m² | 21 527 ft²**

Design Style: **Geome3x**

Website: www.klettern-imst.com



DieKletterhalle

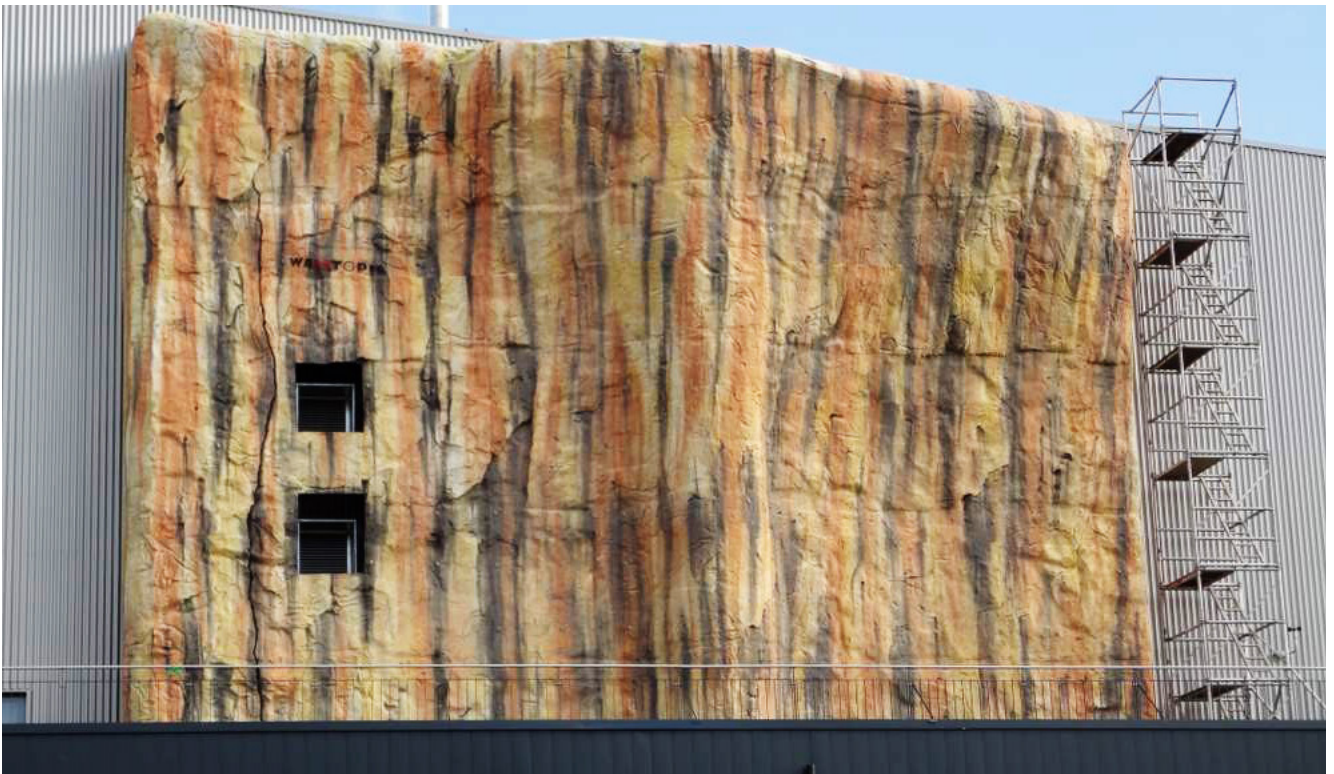
SWITZERLAND, St. Gallen

Year of Completion: **2010**

Total Climbing Surface: **380 m² | 4 090 ft²**

Design Style: **Rocktopia**

Website: www.diekletterhalle.ch



High Moves

GERMANY, Bensheim

Year of Completion: **2009**

Total Climbing Surface: **400 m² | 4 305 ft²**

Design Style: **Rocktopia**

Website: www.kletterhalle-bensheim.de



Durango Climbing Masters

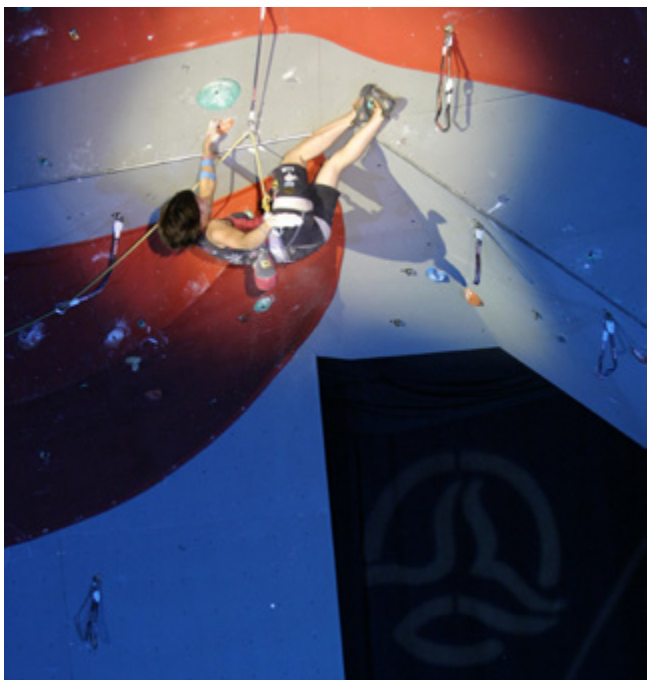
SPAIN

Year of Completion: **2009**

Total Climbing Surface: **135 m² | 1 453 ft²**

Design Style: **Geome3x, 3D Curves**

Website:



Year of Completion: **2007**

Total Climbing Surface: **800 m² | 8 611 ft²**

Design Style: **Geome3x**

Website: www.klimax.be





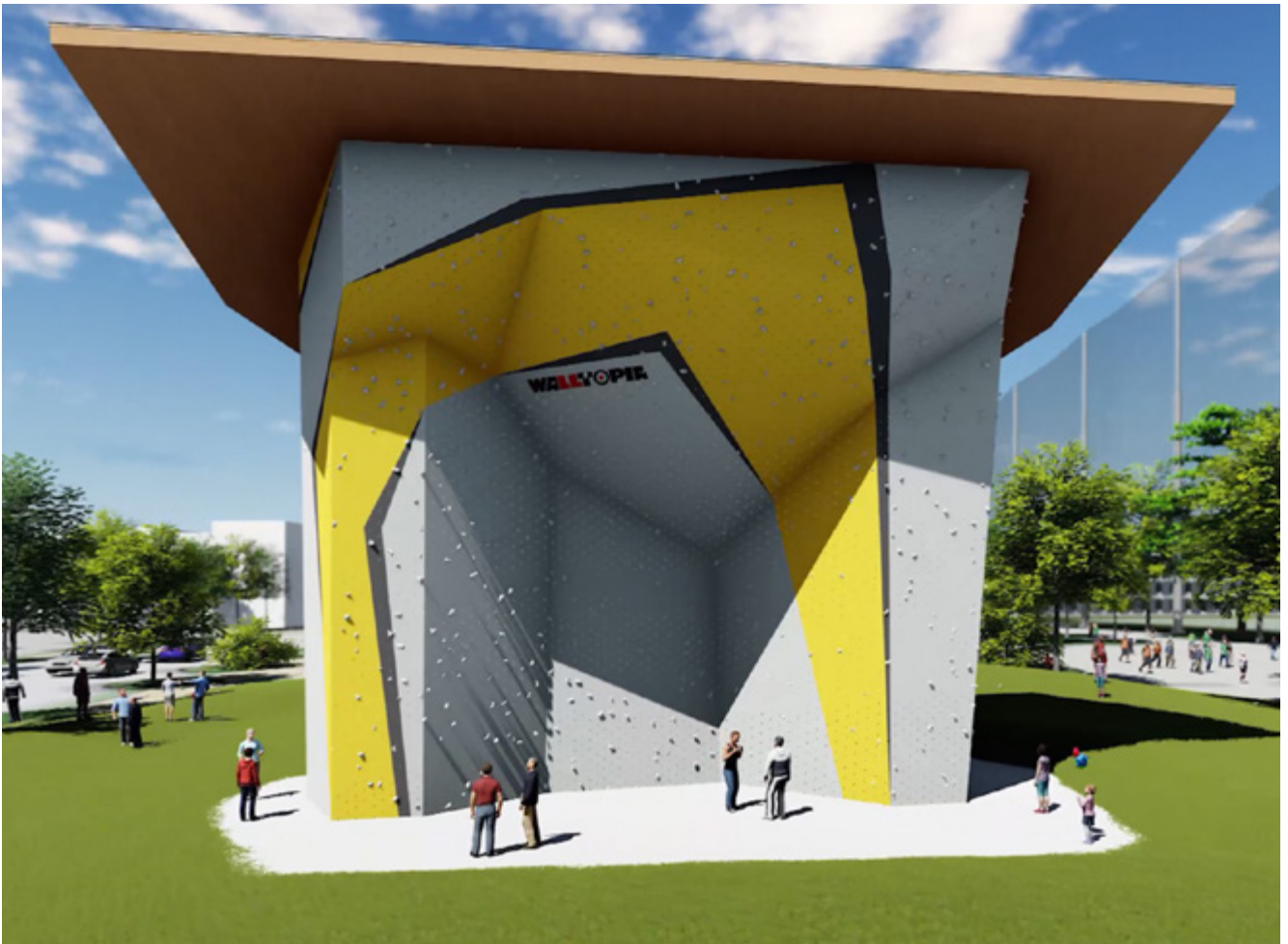
WALLTOPIA
COMING SOON

High Point Huntsville Tower

USA, Huntsville

Phase

Coming soon





WALLTOPIA
CONCEPTS

Military Training Tower

INDIA

Phase

Conceptual Design

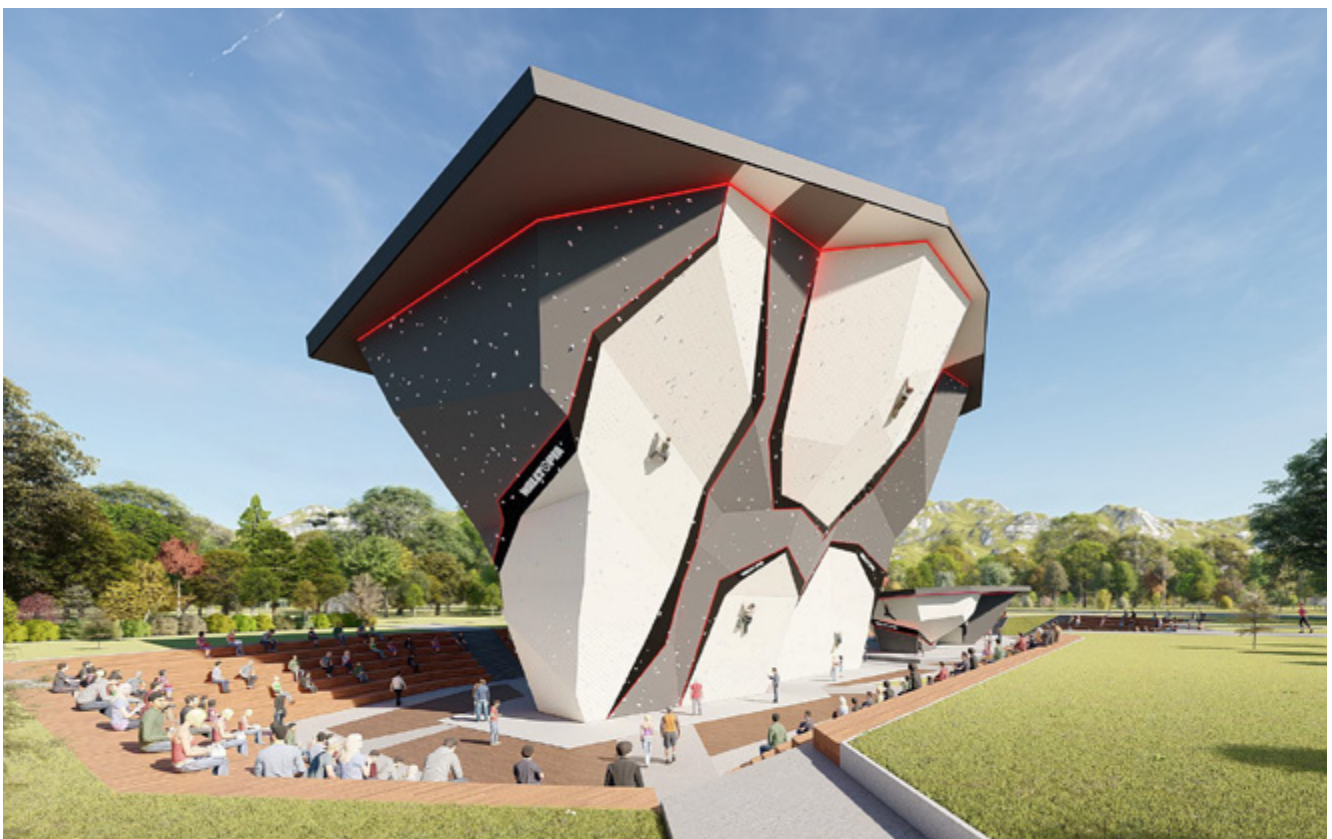


Outdoor IFSC Competition Center

FRANCE

Phase

Conceptual Design

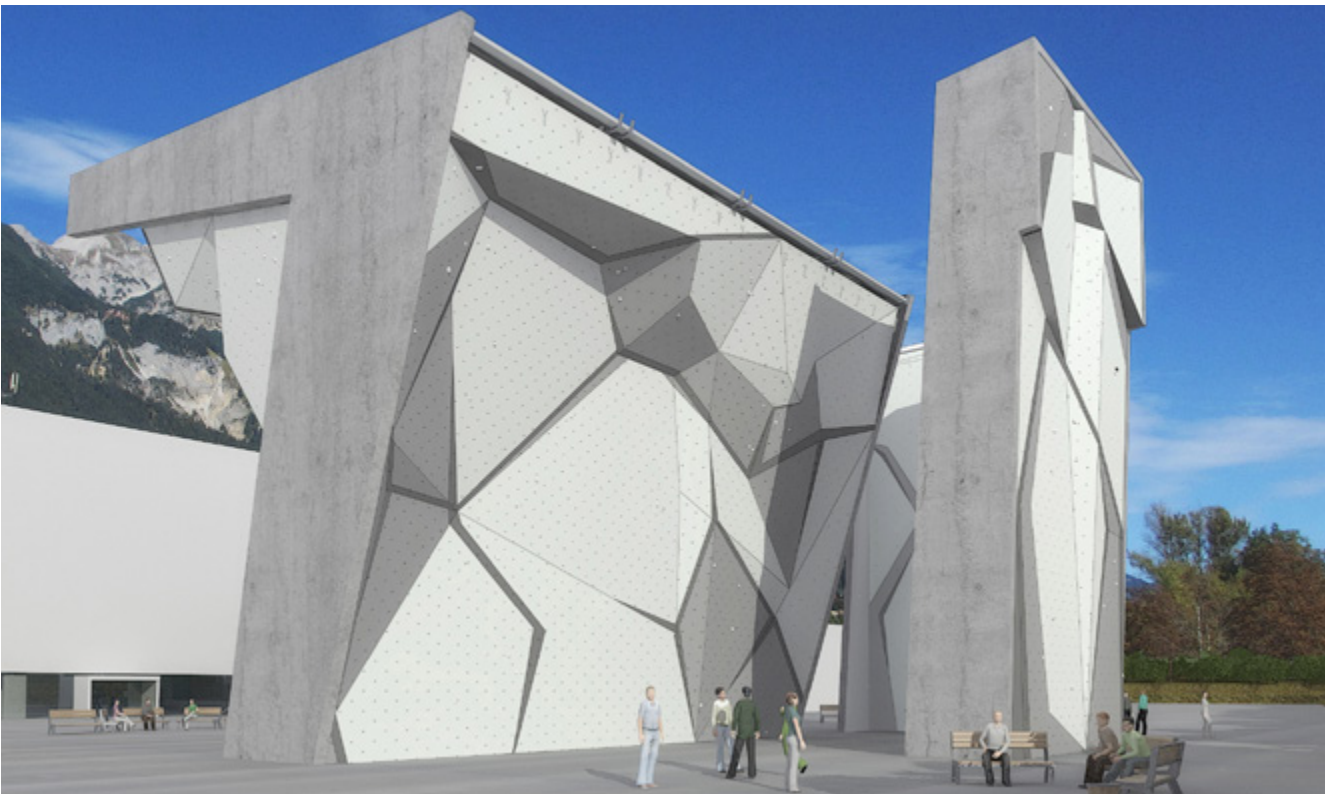


Rope Wall

AUSTRIA, Innsbruck

Phase

Conceptual Design



Phase

Conceptual Design



Shopping Mall

FRANCE

Phase

Conceptual Design

CONCEPT 1



CONCEPT 2



CONCEPT 3



High Point

USA, Memphis

Phase

Conceptual Design



Phase

Conceptual Design

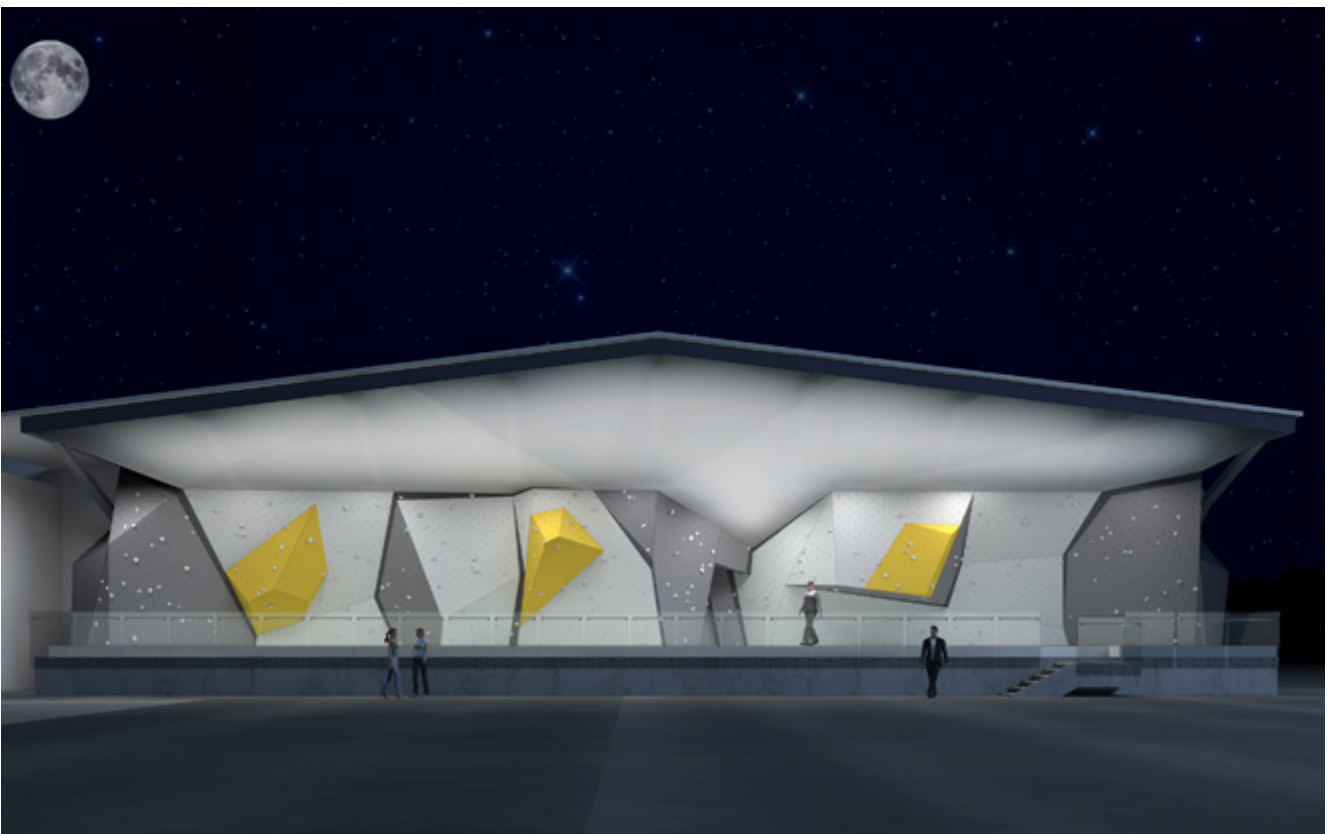
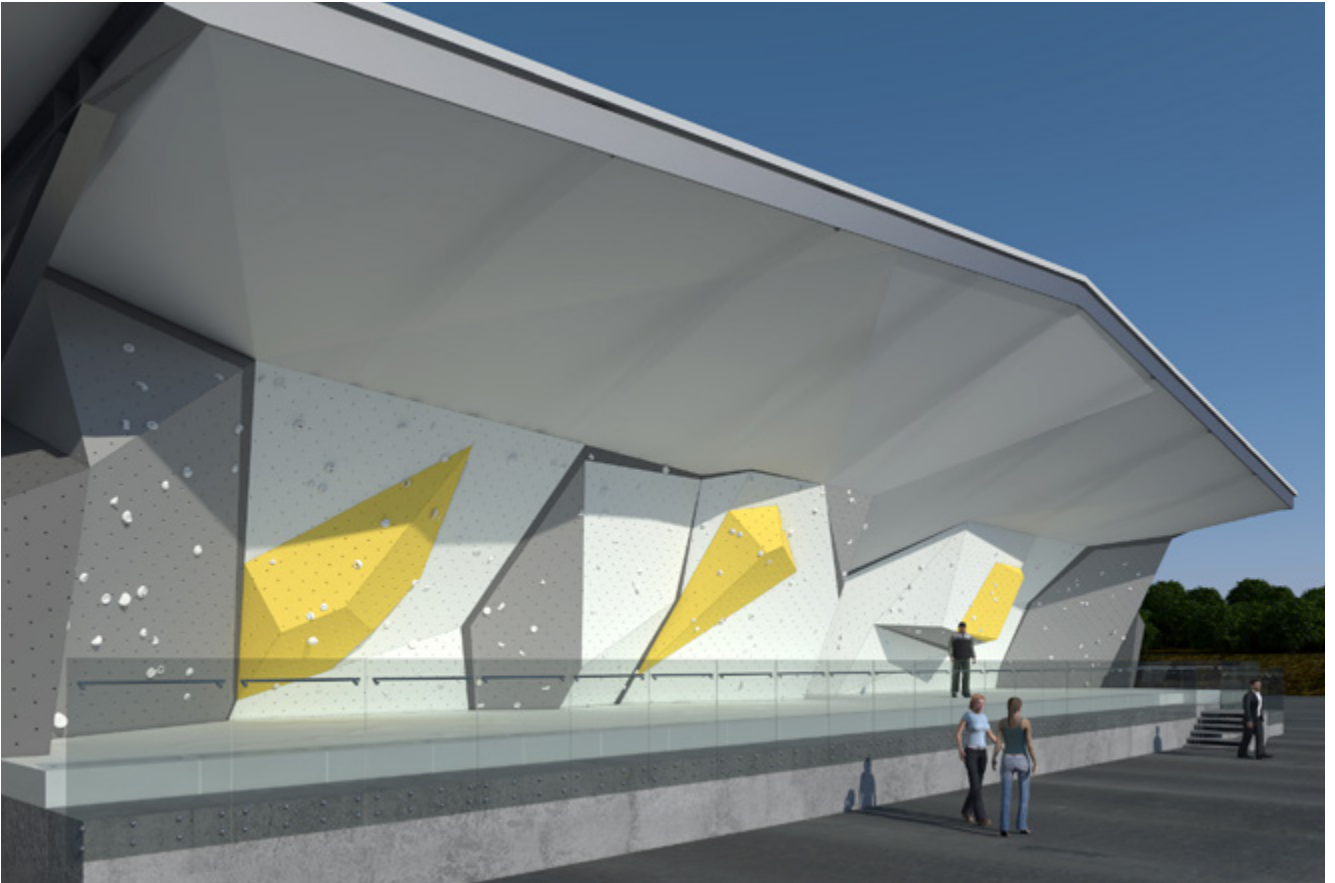


Boulder

AUSTRIA, Innsbruck

Phase

Conceptual Design





CONTACT INFO

Walltopia Sales

sales@walltopia.com

www.walltopia.com/en/contact

WWW.WALLTOPIA.COM

WALLTOPIA